



Performance Products

Purpose • Passion • Performance

2022
Low Drag Components
Catalog

Hub Components • Rod Ends • Tools



888-399-6074 • www.DRPperformance.com

The DRP Low Drag

The Fastest Rolling



DRP HUB DEFENDERS™ Bearing Spacers

DRP Patented Adjustable Wheel Bearing Spacers, US Patent No. 6,312,162, adjust to set the proper “bearing gap”, the distance between inner and outer bearing.

This prevents bearing pre-load, allowing the spindle nut to be completely tightened and bearing load to be distributed across both bearings.

DRP Hub Defenders are easy to install and make an immediate difference you can feel. Prevents over tightening. Reduces Drag. Reduces Temperature. Simplifies maintenance. Increases performance.

Available for all popular racing applications:

- Circle Track • Drag Race
- Road Race • Karting
- Hot Rod • Trailers • Tow Vehicles

If we don't have your application, we will custom build it for you!



DRP LOW DRAG Bearing Kits

Our Premium Bearing Kits offer an ultra-smooth bearing surface due to our Premium Super finishing process. This process uses chemicals in a vibratory mill to cut down the peaks and smooth the surface; therefore, reducing drag and temperature in hubs and throughout the drive train.

Offered in Premium and Standard for popular applications. Premium Low Drag Bearing Kits utilize premium NTN® & Timken® bearings, while standard kits utilize good quality bearings at a lower price point.

DRP Low Drag Bearing kits are available for almost any application, and bearing style. Can't find your listing? Send us your bearing numbers and we'll build a custom kit for you.

Drag Hub System

Hubs Guaranteed.™

- ✓ A difference you can feel!
- ✓ Faster Rolling through the turns.
- ✓ Eliminates Bearing Bind & Friction.
- ✓ Satisfaction Guaranteed or Your Money Back!



DRP LOW & ZERO DRAG Hub Seals

DRP Ultra Low Drag (ULD) Hub Seals are custom built racing seals that incorporate a full PTFE sealing element and lightweight aluminum housing. DRP Air Gap (AG) Seals provide “air curtain” protection to the bearings with No Drag. New Zero Drag (ZD) Seals provide an additional level of bearing protection with virtually Zero drag. The right seal for you depends on your application and level of maintenance desired. All DRP low drag seals are reusable, saving time and money. Available for most popular applications with custom seals available.

Also Available:



Bearing Packers



Hub End Play
Gauges



Seal Drivers

DRP LOW DRAG Wheel Bearing Grease

This is the best wheel bearing grease we have tested, period. There is over a 70% increase in free spin versus most popular greases. Available in 390 gram cartridges, 100 gram cartridges and convenient 50 gram syringes. One syringe will pack approximately 16 bearings.

With your hubs properly set-up, using our low drag grease, you can typically go 250 miles or 2000 laps between repacking! Tech Tip! Don't over-pack your wheel bearings.

Only inject grease between every other bearing roller or approximately 50% full.



Low Drag Hub Defender™ Kits



Save money and simplify ordering with our Low Drag Hub Parts Kits. These kits include one each of our patented DRP bearing spacers, DRP ultra low drag seals, and DRP Premium finished bearing kits.

Race kits are available and sold separately.

New! Available Pre-Packed with our Ultra Low Drag Bearing Grease!

Add \$5.50 to the kit price. (Add 'P' to the Item Number.)

**Wide Five Front or Rear
Premium Bearings/ULD Seal**
007 10500K \$154.55



**Wide Five Front or Rear
Standard Bearings/ULD Seal**
007 10500KC \$119.50



**Wide Five Front or Rear
Premium Bearings/Air Gap Seal**
007 10500K-AG \$163.35



**2" 5x5 Front or Rear
Premium Bearings/ULD Seal**
007 10505K \$138.25



**2" 5x5 Front or Rear (Steel)
Premium Bearings/Air Gap Seal**
007 10505K-AG \$147.15



**2" 5x5 Front or Rear (Aluminum)
Premium Bearings/Air Gap Seal**
007 10506K \$144.75
007 10506K-AG \$153.55



**2 7/8" Wide Five Rear
Standard Bearings/ULD Seal**
007 10510K \$185.45



**2 7/8" Wide Five Front
Standard Bearings/ULD Seal**
007 10512K \$185.45



**2 7/8" GN 5x5 Rear
Standard Bearings/ULD Seal**
007 10513K \$193.00



**Coleman Pro-Lite
Premium Bearings/ULD Seal**
007 10516K \$150.15



**GN 2.5" 5x5 Rear
Premium Bearings/ULD Seal**
007 10518K \$258.30



**GN 2.5" 5x5 Rear Standard
Standard Bearings/ULD Seal**
007 10518KC \$160.75



GN 2.5" 5x5 Rear
Premium Bearings/Air Gap Seal
007 10518K-AG \$260.90



GM Impala Spindle (GM#1)
Premium Bearings/ULD Seal
007 10520K \$144.15



GM #2 (Metric) Front (Alum)
Premium Bearings/ULD Seal
007 10521K \$129.35



GM#2 (Metric) Front (Steel)
Premium Bearings/ULD Seal
007 10521SK \$119.20



'79-'81 Camaro (SET 3, SET 6)
Premium Bearings/ULD Seal
007 10521SK-1 \$119.20



GM Mid-Size - Small Outer Bearing
Premium Bearings/ULD Seal
007 10521SK-2 \$118.70



NASCAR Canada Front
Premium Bearings/ULD Seal
007 10522K \$174.45



NASCAR Mexico Front
Premium Bearings/ULD Seal
007 10522-1K \$174.45



Legends Car Front
Premium Bearings/ULD Seal
007 10529K \$119.20



Legends Car Front
Premium Bearings/Air Gap Seal
007 10529K-AG \$128.00



'82-'96 Camaro
Premium Bearings/ULD Seal
007 10529K-1 \$119.20



NE Dirt Modified 6 Pin Front
Premium Bearings/ULD Seal
007 10530-1K \$148.35



Don't see your application listed? We probably have it or can build it. We will build Hub Defenders, Low Drag Bearing Kits and Seals for almost any Application.

Low Drag Hub Defender™ Kits



**Mustang II/Pinto Front Spindle
Premium Bearings/ULD Seal**
007 10531K \$130.25



**Mustang II/Pinto Hybrid Rotor
Premium Bearings/ULD Seal**
007 10531K-1 \$130.25



**Mustang II/Pinto Hybrid Rotor
Premium Bearings/ULD Seal**
007 10531K-2 \$131.35



'78-'93 Mustang Fox Body
007 10534K \$140.35



'78-'93 Mustang Fox Body (V8)
007 10534K-V8 \$129.35



NE Dirt Modifieds (12292 L)
007 10540K \$154.30



**NE Dirt Modifieds
(Bicknell 4570 Hub/Sway-A-Way)**
007 10541K \$163.80



Complete Legends Kit*
007 10576K \$530.55



*Kit includes (2) Legends Front Low Drag Hub Kits (007 10529K), (2) Legends/Corolla Rear Axle Bearing Kits (007 10576), and (1) ULD Grease Syringe (007 10756).



Tech Tip: If your budget is tight, install bearing spacers on the RF first, then RR, LR, and LF. The RF takes the most load, leading to more RF drag than LF, pulling the car to the right.

If Increased SPEED, Better HANDLING, and Reduced MAINTENANCE are appealing to you, you'll will love our DRP Hub Defenders™!

Hub Defenders™ are bearing spacers than install between the inner and outer bearings.

Bearing spacing on each hub is different, so Hub Defenders™ are adjustable.

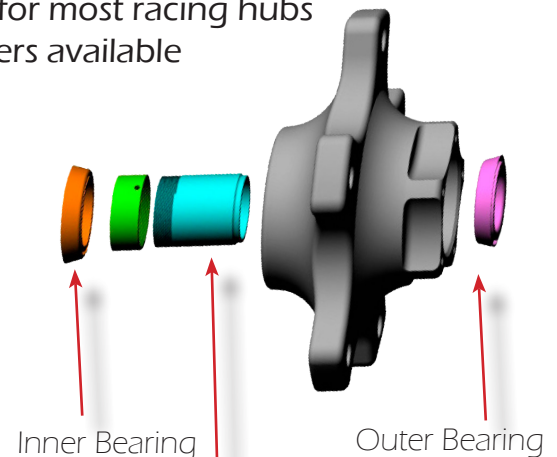
Bearing preload and end play is very sensitive. Our Hub Defender™ system allows you to set each hub for maximum performance quickly.

With Hub Defenders™ installed, you can tighten the spindle nut completely. No more backing off the nut and relying on the locking mechanism to hold your hub on.

Hub Defenders™ eliminate bearing pre-load, reducing friction, lowering bearing temperature, allowing you to go faster and service your hubs less often.



- US Patent number 6,312,162
- Up to 1200% Less Hub Drag!
- Set-screw locks adjustment in place
- Makes servicing hubs simple & quick
- Reduces drag, lowers bearing temperature
- Applications for most racing hubs
- Custom spacers available



Bearing Spacer (Shown in separate pieces to show locking set screw and adjustable threads)



"Run them in my modified, the car would literally try to roll off if the ground wasn't level. It was that free!"



"It was rolling so much faster, I thought there was a problem with the brakes!"



We guarantee your satisfaction! If you're not fully satisfied with the quality and performance of our products, we'll buy them back! Even after they're used!



Tech Tip: For most hubs, set the bearing spacers to .0005" (1/2 of one thousandth) end play with the bearings dry and no seal. Some hubs (Howe/Port City style 5x5) require preload as they pick up end play when hot.

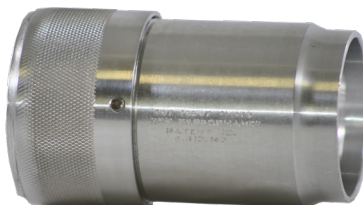


Wide Five (Aluminum)
007 10503 \$53.85



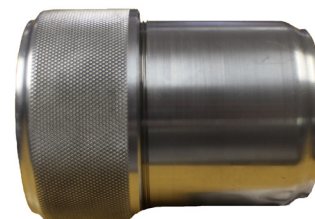
Inner ID: 2.003" Outer ID: 1.829"

Winter's 1 Ton Wide Five (Aluminum)
007 10507 \$63.00



Inner ID: 2.107" Outer ID: 1.968"

DMI 2 1/2 Ton Wide Five
007 10508 \$63.00



Inner ID: 2.369" Outer ID: 2.008"

2 7/8" Wide Five Rear (Aluminum)
007 10510 \$63.00



Inner ID: 2.876" Outer ID: 2.876"

2 7/8" Wide Five Front (Aluminum)
007 10512 \$63.00



Inner ID: 2.876" Outer ID: 2.876"

Wide Five Economy Lightweight Aluminum
007 10500A \$



Inner ID: 2.003" Outer ID: 1.816"

2" 5x5 (Aluminum)
007 10506 \$48.35



Inner ID: 2.002" Outer ID: 2.002"

2" 5x5 (Steel)
007 10505 \$41.85



Inner ID: 2.002" Outer ID: 2.002"

NASCAR Mexico Front (Aluminum)
007 10522-1 \$63.00



Inner ID: 1.38" Outer ID: 1.231"

Canadian Tire Front Hub (Howe Cast Spindle)
007 10522 \$63.00



Coleman Pro-Lite
007 10516 \$48.35



Camaro '68-78
007 10523 \$52.35



GM #2/Metric
007 10521S \$52.35



Inner ID: 1.254" Outer ID: 0.85"
Fits Most GM#2 Spindles

Mustang II/Pinto Front (Steel)
007 10531 \$52.35



Inner ID: 1.38" Outer ID: 0.881"
Most Popular Mustang

'78-'93 Mustang (Fox Body) (Steel)
007 10534 \$63.00



Inner ID: 1.397" Outer ID: 0.872"

Short Track GN 5x5 Rear (Steel)
007 10518 \$57.85



Inner ID: 2.503" Outer ID: 2.503"

2 7/8" GN 5x5 Rear
007 10513 \$63.00



Inner ID: 2.886" Outer ID: 2.886"

Moser/Harris 5x5 Rear (Steel)
007 10526 \$63.00



Inner ID: 2.006" Outer ID: 1.822"

Speedway Engineering Mod-Lite Rear (Steel)
007 10519 \$48.35



Inner ID: 1.189" Outer ID: 1.189"

Sprint Car Front (Aluminum)
007 10530 \$41.85



Inner ID: 1.194" Outer ID: 1.194"

6 Pin Front (Aluminum)
007 10530-1 \$48.35



Inner ID: 1.192" Outer ID: 1.192"

Camaro Long Body
007 10523 \$52.35



Inner ID: 1.25" Outer ID: .755"

Camaro Front (Steel)
007 10532 \$63



Inner ID: 1.194" Outer ID: 1.194"

Camaro Front (Steel)
007 10532-1 \$63



Inner ID: 1.252" Outer ID: 0.84"

Speedway 5x5 Front (Steel)
007 10524 \$63.00



Inner ID: 1.75" Outer ID: 1.157"

Speedway 5x5 Rear (Steel)
007 10525 \$63.00



Inner ID: 2.502" Outer ID: 2.255"

Short Track 5x5 Front (Steel)
007 10515 \$63.00



Inner ID: 1.63" Outer ID: 1.006"

Bicknell/Sway-A-Way Hub (Aluminum)
007 10541 \$57.85



Inner ID: 1.38" Outer ID: 1.194"

Winter's Front (Aluminum)
007 10540 \$48.35



Inner ID: 1.362" Outer ID: 1.2"

Midget Front
007 105479 \$41.35



Inner ID: " Outer ID: 0."

Corvette Front (Steel)
007 10533 \$63.00



Inner ID: 1.397" Outer ID: 0.845"

GM Impala (Aluminum)
007 10520 \$63.00



Inner ID: 1.397" Outer ID: 0.851"

GM #2 Metric (Aluminum)
007 10521 \$63.00



Inner ID: 1.255" Outer ID: 0.847"

Datsun Roadster
007 10547 \$68.35



Inner ID: 1.19" Outer ID: 0.823"

Dodge Challenger '62-72 B/E Body
007 10539 \$63.00



Inner ID: 1.25" Outer ID: 0.750"

Mazda
007 10535 \$51.35



Inner ID: 1.50" Outer ID: 0.798"

**Small Car/Kart 5/8" Spindle,
Wide Hub**
007 105472 \$30.35



Inner ID: 0.636" Outer ID: 0.631"

**Small Car/Kart Short, 3/4" Inner
Spindle 5/8" Outer Spindle**
007 105473 \$30.35



Inner ID: 0.636" Outer ID: 0.631"

**Small Car/Kart Long, 3/4" In-
ner Spindle 5/8" Outer Spindle**
007 105474 \$30.35



Inner ID: 0.755" Outer ID: 0.641"

**Small Car/Kart Bandolero
3/4" Spindle**
007 105478 \$30.35



Inner ID: 0.755" Outer ID: 0.835"

**1/4 Midget/Kart 5/8"
Spindle, Narrow Hub**
007 105471 \$30.35



Inner ID: 0.631" Outer ID: 0.629"

Legends Front (Steel)
007 10529 \$52.85



Inner ID: 1.22" Outer ID: 0.636"



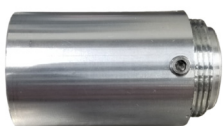
Bug Eye Sprite
007 10537 \$



Inner ID: 0.988" Outer ID: 0.676"



Chevette/Dwarf Car
007 10545 \$63.00



Toyota/Dwarf Car
007 10546 \$63.00



Strange Anglia
007 105301 \$46.25



Inner ID: 1.052" Outer ID: 0.686"

Ford Anglia
007 105302 \$46.25



Inner ID: 1.185" Outer ID: 0.750"

Strange Dragster
007 105303 \$46.25



Inner ID: 0." Outer ID: 0."

Chevy 1 Ton Front Axle
ABS10210 \$51.85



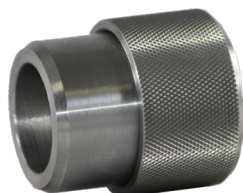
1" ID Trailer (Adjusts from 2.375"-2.625")
ABS20410 \$41.85



1 1/16" ID Trailer (Adjusts from 2.225"-2.550")
ABS20415 \$41.85



1 1/16" x 1 3/8" ID Trailer (Adjusts from 1.950"-2.300")
ABS20417 \$46.25



1 1/4" x 1 3/4" ID Trailer (Adjusts from 1.9"-2.1")
ABS20420 \$46.25



1 3/8" ID Trailer (Adjusts from 1.772"-2.25")
ABS20425 \$46.25



1 1/4" x 1 3/8" ID Trailer (Adjusts from 1.43"-1.83")
ABS20427 \$46.25



Worried about trailer bearing failure? Our adjustable bearing spacers will increase the bearing life, lower temperatures, and reduce maintenance. Properly set trailer bearings reduce toe, improving tire life and fuel economy.

The performance of your racecar rides on your wheel bearings. DRP Low Drag Bearing Kits start with premium quality bearings and go through our proprietary 5 step finishing process (Over 6 Hours!) resulting in some of the best bearings at any budget. Premium kits include NTN® or Timken® bearings. Standard kits include high quality alternatives.

- Lowers Bearing Friction & Temperature • Championship Proven
- Custom Kits Available • Now Available Pre-Packed! (add \$5.50)
- Bearing Kits Contain Inner & Outer Bearings • Race Kits Contain Inner & Outer Race

Wide Five Premium
007 10550 \$81.50 Premium
007 10550C \$46.65 Standard



Wide Five Race Kit
007 10553 \$51.75 Premium
007 10553C \$32.55 Standard



2 7/8" Wide Five Hub Set
Standard
007 10598 \$95.95



2" 5x5
007 10555 \$76.20 Premium
007 10555C \$55.65 Standard



2" 5x5
007 10557 \$52.75 Premium



Winter's 1 Ton Wide Five
Standard
007 10599 \$107.85



GM Metric Front Premium
(Set 3/6) 007 10581 \$46.15



GN 2.5" 5x5 Rear Premium
007 10582 \$174.05



DMI Deuce N Half (DNH)
Wide Five Standard
007 10560 \$214.35



GM Metric Front Premium
(Set 3/6) 007 10581R \$34.60



GN 2.5" 5x5 Rear (Standard)
007 10582C \$76.40



GN 2.5" 5x5 Rear Race Kit
007 10583 \$86.85 Premium
007 10583C \$41.70 Standard



Low Drag Bearing Kits



**2 7/8" 5x5 GN
Standard
007 10591 \$103.50**



**Impala Front Premium
(Set 3/5) 007 10580 \$46.15
Race Kit 007 10580R \$39.65**



**Mustang Front Premium
007 10584 \$57.15**



**Mustang Front Premium
007 10584R \$44.00**



**Mustang/Pinto Hybrid Rotor
007 10584H \$58.30 Premium
Race Kit 007 10580HR \$38.05**



**Mustang Front (V8)
Premium
Bearing Kit 007 10584-V8 \$46.15
Race Kit 007 10584R-V8 \$37.55**



**Mod-Lite Rear Premium
Bearing Kit 007 10590 \$81.42
Race Kit 007 10590R \$46.15**



**Legends Front
Premium
007 10585 \$46.15**



**Legends Front
Premium
007 10585R \$35.15**



**NASCAR CTS Front
Premium
007 10587 \$81.45**



**NASCAR CTS Front
Premium
007 10587R \$58.30**



Causes of excessive end play after hubs are run:

1. Spindle Snout Elongation. (The spindle snout growing in length faster than the hub.)
2. Races Seating. (Common on new hubs.)
3. Excessive beginning end play. For most hubs, we recommend .000 to .0005" End Play.

Sprint Car Front Premium

007 10592 \$63.80
Race Kit 007 10592R \$58.30



6 Pin Front Premium

007 10593 \$75.95
Race Kit 007 10593R \$56.75



Kart Front 5/8" ID (Inner & Outer) Standard

007 10620 \$36.40



Midget Axle Bearing

007 10625 \$21.50



ID: 1.25" OD: 2.25"

Kart Front Standard 3/4" ID Inner, 5/8" ID Outer

007 10621 \$38.60



Cup (Speedway) Front Premium

007 10595 \$179.35



Cup (Speedway) Front Premium

007 10595R \$215.20



Kart Axle Bearing - Standard Small

007 10622 \$70.30



Cup (Speedway) Rear Premium

007 10597 \$86.85



Cup (Speedway) Rear Premium

007 10597R \$69.30



Kart Axle Bearing - Standard Large

007 10624 \$81.85



Wheel bearings use a thin film of grease or oil to separate the bearing roller from the race. The ideal thickness of this film is dependent on the load and RPM of the bearing. When selecting a lubricant, choose one that is designed for high RPM applications as well as high load. A lubricant with too high viscosity can add drag and temperature rather than reduce it.

Quick Change Carrier Bearing Kit - Premium (Tiger Carriers)
007 10810 \$104.75



Quick Change Carrier Bearing Kit Premium (Winter's Carriers)
007 10812 \$118.85



Quick Change Pinion Bearing Kit - Premium
007 10816 \$163.45



9" Ford Rear Axle (Set 20) Premium
007 10820 \$88.15



9" Ford Carrier Kit Premium
007 10822 \$90.55



9" Ford Pinion Kit Premium
007 10825 \$120.55



Legends Pinion Hub Set Premium
007 10830 \$92.45



Legends Carrier Hub Set Premium
007 10835 \$94.85



Legends/Corolla Rear Axle Bearing Kit - Premium
007 10576 \$125.15



Complete Legends Kit*
007 10576K \$530.55



*This kit includes (2) Legends Front Low Drag Hub Kits (007 10529K), (2) Legends/Corolla Rear Axle Bearing Kits (007 10576), and (1) ULD Grease Syringe (007 10756).

Seals are critical in protecting your bearings. But seals can produce a lot of drag. Our Low Drag Seals Solve that Problem! All DRP Seals are Re-Usable.

DRP Low Drag Hub Seals are available in 3 Styles:

Ultra Low Drag (ULD) - Our original Ultra Low Drag Seal. Provides a Full Seal. Full PTFE Element. Ideal for Dirt and Road Race Applications or Low Maintenance Asphalt Applications.

New! Zero Drag (ZD) - Our newest seal. Nearly Zero Drag. Labyrinth Style. 80% Protection. Ideal for Asphalt Circle Track & Drag Applications. Water and Dust Resistant, but not Water & Dust Proof.

Air Gap (AG) - No Drag. Leaves a small Gap between the Seal & Spindle. Provides an "Air Curtain" via Air Turbulence. 50% Protection. Will allow water and dust to freely pass. Ideal for Pro Asphalt Teams.

Wide Five ULD
007 10559 \$25.20



2.346 ID; 3.486 OD; 0.376 W

Wide Five Zero Drag
007 10559Z \$35.00



2.346 ID; 3.486 OD; 0.376 W

Wide Five Air Gap
007 10559AG \$34.00



2.385 ID; 3.480 OD; 0.372 W

2 7/8" Wide Five (Bert/Winter's)
007 10569 \$31.50



2.952 ID; 4.005 OD; 0.375 W

**2 7/8" Wide Five
Large ID Spindles with Steel Ring**
007 10570 \$31.50



3.213 ID; 4.004 OD; 0.374 W

**Winters 1 Ton Wide Five
Ultra Low Drag**
007 10559-1 \$31.50



ID; OD; 0.374 W

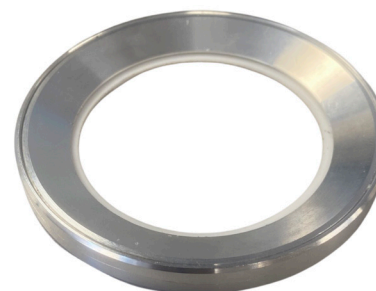


**DMI Deuce N Half
Zero Drag**
007 10558Z \$35.00



ID; OD; 0.374 W

**Winters 1 Ton Wide Five
Zero Drag**
007 10559-1Z \$35.00



ID; OD; 0.374 W

**2" 5x5/Howe Wide Five
Ultra Low Drag
007 10564 \$25.20**



2.352 ID; 3.503 OD; 0.380 W

**2" 5x5/Howe Wide Five
Zero Drag
007 10564Z \$35.00**



2.386 ID; 3.500 OD; 0.360 W

**2" 5x5/Howe Wide Five
Air Gap
007 10564AG \$34.00**



2.386 ID; 3.500 OD; 0.360 W

**GN 2.5" 5x5 Rear
Ultra Low Drag
007 10568 \$31.40**



2.94 ID; 3.757 OD; 0.374 W

**GN 2.5" 5x5 Rear
Zero Drag
007 10568Z \$35.00**



3.01 ID; 3.756 OD; 0.362 W

**GN 2.5" 5x5 Rear
Air Gap
007 10568AG \$34.00**



3.01 ID; 3.756 OD; 0.362 W

**GM Mid-Size (Metric) Front
Ultra Low Drag
007 10577 \$25.20**



1.946 ID; 2.567 OD; 0.254 W

**GM Mid-Size (Metric) Front
Zero Drag
007 10577Z \$35.00**



1.946 ID; 2.567 OD; 0.254 W

**GM Mid-Size (Metric) Front
Air Gap
007 10577AG \$34.00**



1.946 ID; 2.567 OD; 0.254 W

**Mustang II Front
Ultra Low Drag
007 10572 \$25.20**



1.928 ID; 2.509 OD; 0.251 W

**Mustang II Front
Zero Drag
007 10572Z \$35.00**



1.928 ID; 2.509 OD; 0.251 W

**Mustang II Front
Air Gap
007 10572AG \$34.00**



1.928 ID; 2.509 OD; 0.251 W

Cup Style (Speedway) RF
007 10565R \$31.40



2.466 ID; 3.553 OD; 0.374 W

Cup Style (Speedway) LR
007 10566L \$31.40



2.94 ID; 4.01 OD; 0.383 W

Cup Style (Speedway)
007 10566R \$31.40



2.962 ID; 4.008 OD; 0.378 W

Cup Style (Speedway) LF
007 10565L \$31.40



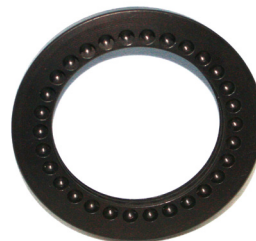
2.462 ID; 3.553 OD; 0.376 W

NASCAR Canada Front
007 10578 \$35.00



1.941 ID; 2.966 OD; 0.306 W

NASCAR Canada Front
007 10578AG \$34.00



2.003 ID; 2.980 OD; 0.308 W

**Legends Front
Ultra Low Drag**
007 10575 \$25.20



1.893 ID; 2.443 OD; 0.265 W

**Legends Front
Zero Drag**
007 10575Z \$35.00



1.893 ID; 2.443 OD; 0.265 W

**Legends Front
Air Gap**
007 10575AG \$34.00



1.94 ID; 2.444 OD; 0.276 W

**9" Ford Pinion Seal
Ultra Low Drag**
007 10827 \$25.20



2.352 ID; 3.503 OD; 0.380 W

**6 Pin Front
Ultra Low Drag**
007 10940 \$35.00



1.851 ID; 2.885 OD; 0.362 W



Low Drag Bearing Grease



When we first tested this grease on our Hub Dynamometer, we thought we had made a mistake with the test. Then we thought, there's no way this grease is this good. Well, there is a way.

Our Ultra Low Drag Wheel Bearing Grease from Kluber Lubrication is incredible.

You will be impressed!

50 Gram Syringes allow you to inject grease between bearing rollers.

100 & 390 Gram Cartridges work great in our Wheel Bearing Packers.



Fill every other bearing roller cavity full, for a total bearing pack of 50%. No more grease is needed!

Re-Pack Bearings every 500 miles or after any sign of water or dust intrusion.



Packs Approximately 16 Bearings

50 Gram Syringe
007 10756 \$41.85



Packs Approximately 32 Bearings

100 Gram Cartridge
007 10753 \$68.25



Packs Approximately 125 Bearings

390 Gram Cartridge
007 10750 \$185.00



Tech Tip: Race hub bearings are typically overpacked. The bearing should be approximately 50% packed. Properly packed bearings will run cooler with less drag and lubricate the bearing better. It also reduces maintenance and increases bearing life.

Save time, headache and mess with our Precision Bearing Packers. Accurately inject the appropriate amount of grease between bearing rollers. Eliminates excessive temperature and hub pressure build-up due to over packing wheel bearings.

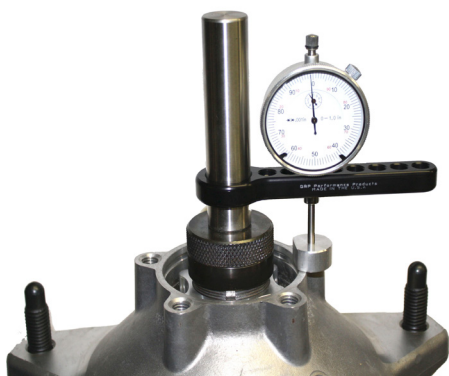


- **Fast! Pack a Bearing in less than 60 Seconds.**
- **No Mess! No Wasted Grease!**
- **Makes Packing Wheel Bearings Enjoyable!**
- **Full Size Bearing Packer uses Bearing Seats & 390 Gram Cartridges.**
- **Mini Bearing Packer is Universal and uses 100 Gram Cartridges.**



Part Number	Application	Price
007 80520	Full Size Wide 5	\$208.95
007 80522	Full Size 2" 5x5	\$198.45
007 80526	Full Size Cup Style Front & Rear	\$241.50
007 80532	Full Size 2 7/8" Wide 5	\$198.45
007 80534	Full Size NASCAR MX/CTS Front & Rear	\$219.45
007 80536	Full Size Mustang Front/2.5" GN Rear	\$219.45
007 80600	Mini (100 gram); Universal Fit	\$84.85

Our Hub End Play Gauges are the quickest way to accurately set-up bearing pre-load spacers. This tool screws onto your spindle and reads hub end play to .0005". Once an end play measurement is obtained, simply adjust the spacer to the desired end play or pre-load and set the spacer lock. This tool will also measure hub run-out. The arm, indicator, and shaft are all universal so this tool can be used for multiple applications. Just swap out the spindle adapter for different applications and you have an end play gauge for any hub!



Part Number	Application	Price
007 80850	Wide Five & 2" 5x5	\$167
007 80852	2 7/8" Wide Five	\$177
007 80855	GN (Short Track) 5x5 Front (SCP Style)	\$135
007 80857	GN (Short Track) 5x5 Rear (SCP/IMCA Style)	\$167
007 80860	Speedway 5x5 Front (Cup Style)	\$135
007 80862	Speedway 5x5 Rear (Cup Style)	\$167
007 80865	Mustang/Pinto Front (IMCA)	\$135
007 80867	GM Front Spindles; 3/4"-20 NASCAR CTS	\$135
007 80868	NASCAR Mexico Front (Sweet Spindles)	\$167
007 80870	Legends Front	\$135

Use our hub seal drivers to make seal installation simple and easy. Drivers quickly pay for themselves by avoiding damage and wasting seals. A premium quality, lifetime tool.

Part Number	Application	Price
007 80500	Wide Five & 2" 5x5	\$44
007 80502	Speedway Front (Cup Style)	\$44
007 80503	Speedway Rear (Cup Style)	\$44
007 80504	NASCAR Canadian & Mexico Front	\$44
007 80505	5x5 (Short Track) Front	\$44
007 80506	2.5" 5x5 Rear	\$49
007 80508	2 7/8" Wide Five Front	\$49
007 80509	2 7/8" Wide Five Rear	\$56
007 80510	Mustang Front	\$44
007 80511	Speedway Engineering Mod-Lite	\$44
007 80512	Mustang Front & 2.5" GN Rear (Modified Seal Driver; Reversible Head)	\$58
007 80513	Legends	\$44
007 80514	GM #2 Metric	\$44



Hub Seal Removers

Remove seals quickly and easily with this high-quality tool. Our seal remover will remove seals to be reused without damaging them saving time and money.



Wide Five & 2" 5x5 007 80515 \$44



Rod Ends are the Number 1 Source of Binds in Your Race Car.
 DRP Low Drag Rod Ends are Processed like our Low Drag Wheel Bearings.
 We've measured up to a 300% reduction in friction vs. standard rod ends.

Part Number	Size	Price
52201	1/4" RHM	\$15.50
52202	1/4" LHM	\$15.50
52301	3/8" RHM	\$16.35
52302	3/8" LHM	\$16.35
52501	1/2" RHM	\$20.25
52502	1/2" LHM	\$20.25
52503	1/2" RHF	\$20.25
52601	5/8" RHM	\$25.85
52602	5/8" LHM	\$25.85
52611	5/8" RHM Chromoly	\$27.75
52612	5/8" LHM Chromoly	\$27.75
52701	3/4" RHM	\$30.15
52705	3/4" LHM	\$30.15



Binds are one of the leading culprits of poor handling. Binds prevent the chassis from traveling, applying load spikes to the tires, which in turn causes grip loss on low grip tracks. If your set up that once worked good isn't working anymore, it may be time to check for binds.

Purpose • Passion • Performance

More than a slogan, these are the pillars of our culture and define who we are.

Purpose: DRP is a business ministry. Our purpose is summed up in our Mission Statement:

"Our mission is to build exceptional products that led people to us, so that we may lead them to Jesus." We "lead others" to Jesus through our actions and placing copies of God's word around the world. To date, DRP has placed millions of copies of God's word in countries all around the world. Our goal is to share Jesus with 100,000,000 people, while transforming our community.

Passion: We are passionate about quality products, exceptional service and our purpose.

Performance: We are a performance company. We build high performance products and work in a high performance way. Every product we build is designed to improve your performance on the track.

Our Ministry Partners:



THE
POCKET
TESTAMENT
LEAGUE®



WORLD REACH
PARTNERSHIPS

Henry County
Food Pantry



**Check Out Our Chassis Set-Up Products
Catalog & Our On-line Training
Platform:**



DRPUNIVERSITY.COM

