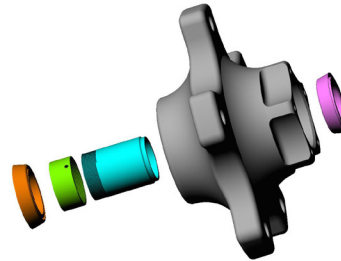
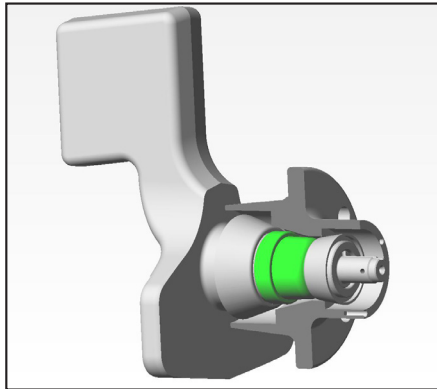




Performance Products

Hub Bearing Spacer Installation Instructions



Step 1: With bearings clean and dry (no grease), adjust bearing spacer out to 3/4 of it's maximum length.

Step 2: Install hub with bearing spacer between bearings. Completely tighten spindle nut. Rock hub to check for end play in the bearings.

If no end play is noticed, adjust spacer out longer and repeat step 2 until end play exists.

Step 3: Remove spacer and adjust in (shorter) until end play is removed. To increase accuracy and performance, use a dial caliper or micrometer and measure the spacer height and adjust in (shorter) .001"-.002" per try until proper end play is achieved. (See the chart below for proper end play or preload.) DRP Hub End Play Gauges are available for most hub styles and speed this process while achieving maximum accuracy.

Be sure to completely tighten spindle nut each time. Tighten spacer set screw or use thread locker to prevent accidental adjustment. When no set screw is present, apply thread locker before final adjustment. Keep hub, bearings and spacers together as a set. Replacing hub, bearings or races will require resetting spacer. Suggested spindle nut torque is 20-40 ft lbs.

Hub Style	Suggested Pre-Load	Notes
Wide Five Style Hubs	.000" - .0005" End Play	Hub, Spindle and Spacer expansion difference minimal
2" Bearing (368A Bearings) Aluminum Hubs	.002" - .003" Preload	Must run preload. Races move closer at race temperature.
2" Bearing (368A Bearings) Steel Hubs	.001" - .000" Preload	Little to no preload required.
2 7/8" Big Bearing Wide Five Hubs	.001" - .000" Preload	Little to no preload required.
GN Aluminum 5x5 Hubs	.001 - .002" Preload	Slight preload recommended.
GN Steel 5x5 Hubs	.001" - .000" Preload	Little to no preload required.
Stock (Cast Iron) Front Hubs	.001" Preload	Slight preload recommended.
Stock Replacement (Aluminum) Front Hubs	.001" - .000" Preload	Little to no preload required.
Legends Car Front Hubs	.001" - .000" Preload	Little to no preload required.
Drag Race Front Hubs	.000" - .0005" End Play	No preload required.

The DRP Story

DRP has been part of the racing industry since 1986. Starting as a track side parts supplier and growing into a leading distributor for the Mid-Atlantic region. In 2005, however, everything changed. Finally realizing that this company wasn't his, the second generation owner surrendered DRP fully to GOD for His will and purposes. "We were then led to leave distribution and begin manufacturing our own, original, premium quality products." This was made all the more challenging as 2005 was a record sales year and neither the owner or employees had any manufacturing experience. Equipment was purchased, warehouse employees were converted into machine shop workers and the rest is history. "Today our purpose is to share what we've been so freely given. And that is the eternal hope and peace found only in Jesus Christ." These products make that possible. Thank you for your business and support!



"Let us run with endurance the race that is set before us..." Hebrews 12:1

2089 Crooked Oak Road Rocky Mount, Virginia 24151 888-399-6074 540-484-1756 Fax